

August 2009 - KCDMA E-News

In this issue...

[Golf Winners and Almost Winners](#)

[Social Marketing Luncheon August 11](#)

[Turning Social Marketing into Profits](#)

[DMA 09 Annual Conference](#)

[Increase your Effectiveness with KCDMA](#)

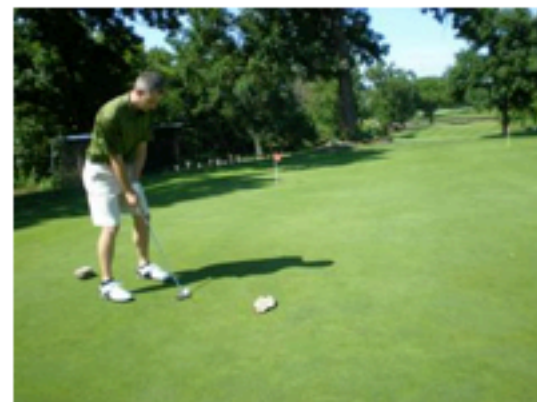
**Golf Winners and Almost Winners**

The winning team at Tuesday's Annual KCDMA Golf Tournament at Deer Creek was **Team J. Schmid**, comprised of Steve Trollinger, Brent Niemuth, Brian Irvine and Chris Brandow. Congrats, fellas!

Winners:

- Champions: Team J. Schmid
- Mens long drive winner: Bob Boring
- Womens Long drive winner: Teri Buek
- Closest to the Pin: Bob Boring
- Longest Putt: Jeff Chaney
- Putting contest \*almost\* winner: Brad Cope

Photo: Brad Cope qualified for the 50 ft shot with his initial putt "hole in one", but, unfortunately, he didn't make the long shot. We consider him the "almost winner".



Thanks once again to these sponsors:

- [Info-Data](#) – Tournament Sponsor
- [MCH](#) – Lunch Sponsor
- [Emfluence](#) – Putting Contest Sponsor
- [Summit Marketing](#) – Hole Sponsor

[back to top](#)

**Navigating the Social Media Terrain**

Is your Social Media strategy getting the results you want? Join us for real-world examples of social media efforts that work. Spiral 16's Kelly Kearney and Whitney Mathews will review the current social media landscape and its implications for global business.

**August 11, 2009** | \$30 Member | \$45 Nonmember

11:00 - 11:30 a.m. Registration & Networking

11:45 a.m. - 1:00 p.m. Lunch & Program

Figlio Tower, The Plaza Room, Country Club Plaza (across from the J.C. Nichols Fountain)

209 West 46th Terr, Kansas City, MO 64112

**KCDMA Luncheon**  
Tuesday, August 11, 2009  
Navigating the Social Media Terrain

Don't miss this one! Registration ends Friday, August 7th at 5 p.m. **LAST CHANCE!** [Register now!](#)



**Silver Sponsors:**

[Jim Bowie Killer Photography](#), [The ALC Group](#), [Kansas City Digital Press](#), [Tension Envelope](#),  
[Kansas City Automated Mail](#), [Soli Printing](#), [J2 Printing](#)

**[About KCDMA](#) | [Forward to a Friend](#)**

638 W. 39th Street | P.O. Box 419264 | Kansas City, MO 64141 | [www.kcdma.org](http://www.kcdma.org)

2009 © Kansas City Direct Marketing Association. All rights reserved.

To edit your email preferences [click here](#).

This email sent courtesy of emfluence

